

Information › Solutions

## FRAME PARTITION SYSTEMS

### DESCRIPTION

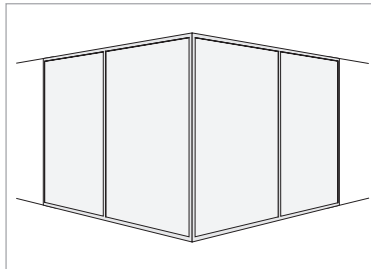
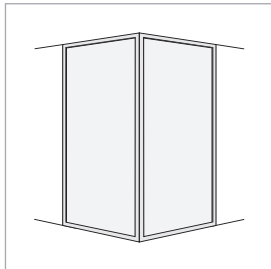
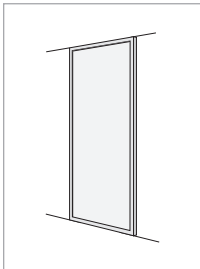
Lumicor Frame Partition Systems deliver a clean lined, crisp profile, perfect for that fast track project that needs a turn-key solution. Customize your installation with over 250 available décor choices. An excellent solution when large spans are required to create cohesive work spaces or conference rooms while still allowing light pass through and a decorative aesthetic.

### STANDARD CONFIGURATIONS

48" × 96"  
(1219 × 2438 mm)  
i41084

48" × 48" × 96"  
(1219 × 1219 × 2438 mm)  
i41085

92.25" × 92.25" × 96"  
(2343 × 2343 × 2438 mm)  
i41086



Custom configurations available

### PRODUCT SPECIFICATION

#### Gauge

- .354" (9 mm)

### DÉCORS

Frame Partition Systems can be used with all Lumicor décors available.

### TO ORDER

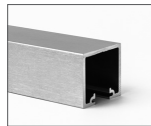
Call **1.888.LUMICOR** or visit **lumicor.com** to find a representative near you.

### HARDWARE

Lumicor Frame Partition Systems come with all components needed to frame all four sides of the Lumicor Panel, and has a beautiful satin silver finish.



Sill & Anchor



Header

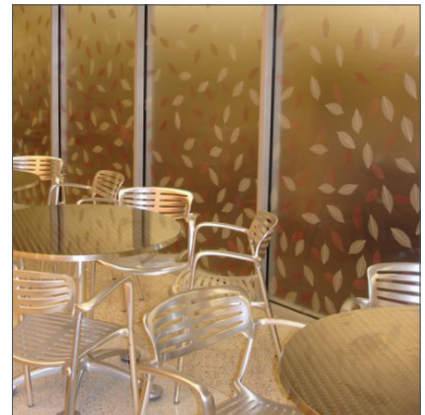


Vertical Post



90 Degree Corner  
Vertical Post

### APPLICATIONS



NATURAL | Natural Leaves

### ENVIRONMENTALLY FRIENDLY

Lumicor Frame Partition Systems are made using Lumiclear R4 acrylic which contains 50% recycled material and is 100% recyclable. Frame Partition System hardware is factory fabricated out of aluminum made from a minimum of 50% post-consumer recycled content. Our resin products do not release any harmful vapors.

